

**CT-1 CENTER SECTION & SIDE BELL COMPONENTS**



**RRC-1102**  
CT-1 Magnesium  
Left Side Bell  
- 6 Rib

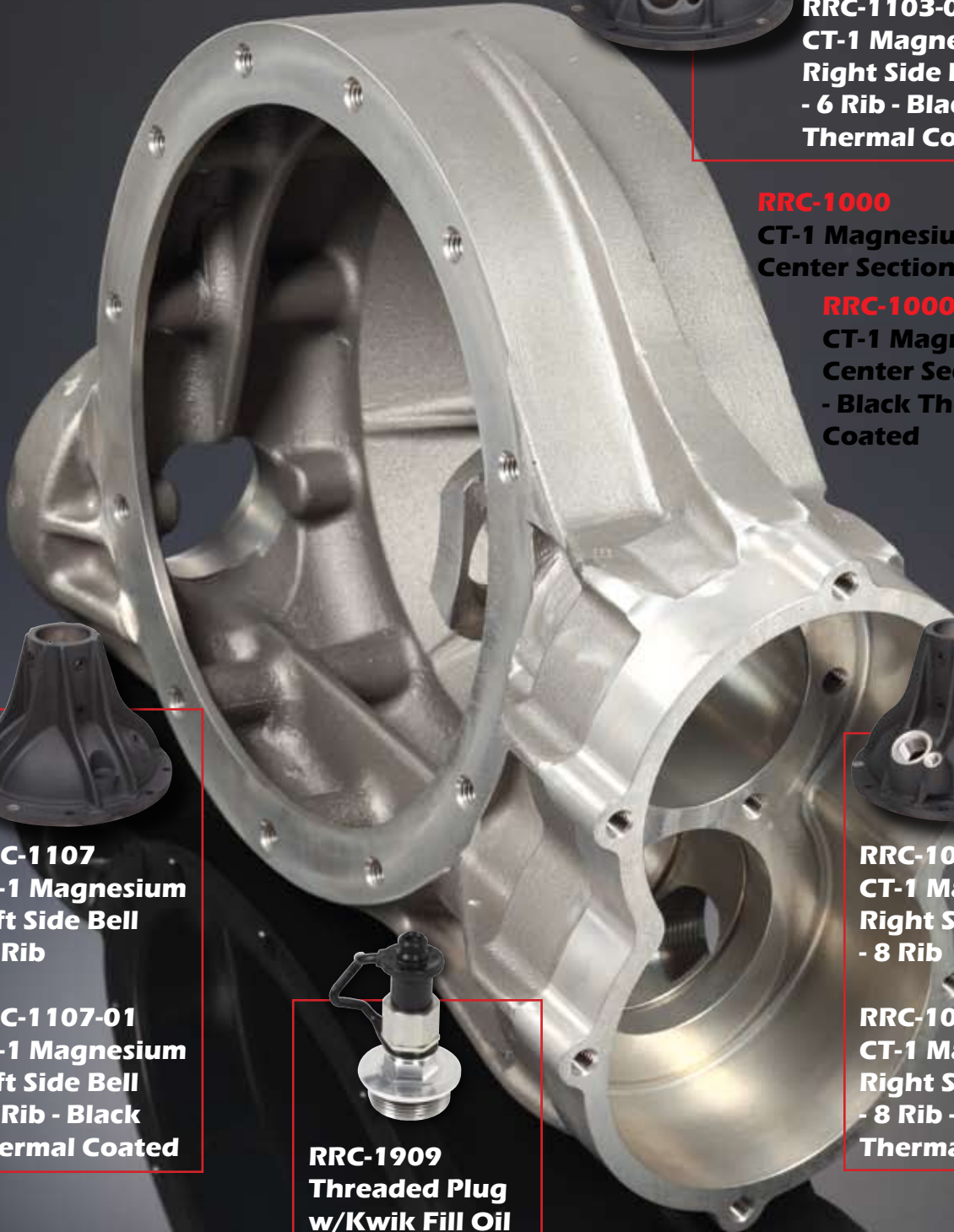
**RRC-1102-01**  
CT-1 Magnesium  
Left Side Bell  
- 6 Rib - Black  
Thermal Coated

**CT-1 Center Section and Side Bells**  
are cast from **100% magnesium** and  
heat-treated to aircraft quality.



**RRC-1103**  
CT-1 Magnesium  
Right Side Bell  
- 6 Rib

**RRC-1103-01**  
CT-1 Magnesium  
Right Side Bell  
- 6 Rib - Black  
Thermal Coated



**RRC-1000**  
CT-1 Magnesium  
Center Section

**RRC-1000-01**  
CT-1 Magnesium  
Center Section  
- Black Thermal  
Coated



**RRC-1107**  
CT-1 Magnesium  
Left Side Bell  
- 8 Rib

**RRC-1107-01**  
CT-1 Magnesium  
Left Side Bell  
- 8 Rib - Black  
Thermal Coated



**RRC-1008**  
CT-1 Magnesium  
Right Side Bell  
- 8 Rib

**RRC-1008-01**  
CT-1 Magnesium  
Right Side Bell  
- 8 Rib - Black  
Thermal Coated



**RRC-1909**  
Threaded Plug  
w/Kwik Fill Oil  
Connector Assy.  
w/Covers



**RRC-1002**  
Front Seal for  
CT-1 Seal Plate



**RRC-1002T**  
Front Seal for  
CT-1 Seal Plate  
- Teflon Lip



**RRC-1010**  
Large  
Inspection  
Plug



**RRC-1016**  
Fill Level  
Plug



**RRC-1034**  
Breather  
Assembly



**RRC-1001**  
Front Seal  
Plate for CT-1

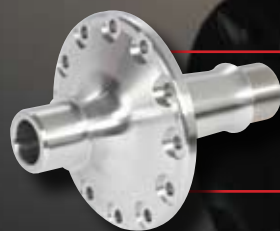
<b>RRC-1001B</b> Front Seal Plate for CT-1 w/o 2 Counterbores
<b>RRC-1001C</b> Front Seal Plate for CT-1 w/o Counterbores
<b>RRC-1003</b> Seal O-Ring for CT-1 Seal Plate
<b>RRC-1004</b> O-Ring for CT-1 Seal Plate Flange
<b>RRC-1007</b> Spirallock for Seal Plate
<b>RRC-1011</b> Bolt for CT-1 Seal Plate to Center
<b>RRC-1011A</b> Bolt for CT-1 Seal Plate to Center - Non Counter-Bored
<b>RRC-1012</b> Washer for CT-1 Seal Plate to Center
<b>RRC-1015</b> Large Inspection Plug O-Ring
<b>RRC-1017</b> Fill Level Plug O-Ring
<b>RRC-1031</b> 3/8" NPT Magnetic Drain Plug
<b>RRC-1032</b> Port -8 to -10 Union
<b>RRC-1104</b> CT-1 Side Bell Axle Seal
<b>RRC-1104T</b> CT-1 Side Bell Axle Seal - Teflon Lip
<b>RRC-1105</b> Side Bell O-Ring
<b>RRC-1110</b> Side Bell Stud
<b>RRC-1111</b> Short Bolt for CT-1 Side Bell to Tube
<b>RRC-1112</b> Bolt for CT-1 Side Bell to Tube

<b>RRC-1113</b> Locknut for CT-1 Side Bell to Tube
<b>RRC-1114</b> Hardened Washer for CT-1 Side Bell to Tube
<b>RRC-1115</b> Belleville Washer for Inside CT-1 Tube
<b>RRC-1116</b> CT-1 Steel Side Bell Stud
<b>RRC-1124</b> CT-1 5" Center / Side Bell Thru Bolt
<b>RRC-1125</b> CT-1 5.5" Center / Side Bell Thru Bolt
<b>RRC-1126</b> CT-1 6" Center / Side Bell Thru Bolt
<b>RRC-1127</b> CT-1 Side Bell Flange Nut
<b>RRC-1128</b> CT-1 6.5" Center / Side Bell Thru Bolt
<b>RRC-1129</b> CT-1 7" Center / Side Bell Thru Bolt
<b>RRC-1130</b> Side Bell Washer
<b>RRC-1180</b> Detent for CT-1 Side Bell to Tube
<b>RRC-1907</b> O-Ring for Threaded Plug (RRC-1908)
<b>RRC-1908</b> Threaded Plug to Accept Kwik Fill Connector
<b>RRC-1910</b> Kwik Fill Oil Connector Assy. w/ Covers
<b>RRC-1911</b> Female Kwik Fill w/ Cover
<b>RRC-1912</b> Male Kwik Fill w/ Cover
<b>RRC-1913</b> Plastic Plug/Cap for Kwik Fill

**CT-1 CENTER SECTION & SIDE BELL COMPONENTS**

**DMI Aluminum Spools** are forged from ultra strong 7075 material. Fully CNC machined to exact specs for precision and quality.

**RRC-1271**  
**CT-1 Aluminum Spool - UltraLight**



**RRC-1270**  
**CT-1 Aluminum Spool**

**RRC-1170** CT-1 Side Bell Race

**RRC-1171** CT-1 Side Bell Bearing for Aluminum Spool

**RRC-1172** CT-1 Side Bell Bearing for Steel Spool

**RRC-1173** CT-1 Side Bell Bearing for Aluminum Spool - Severe Duty

**RRC-1272** CT-1 .010 Spool Shim

**RRC-1273** CT-1 .012 Spool Shim

**RRC-1274** CT-1 .015 Spool Shim

**RRC-1275** CT-1 .020 Spool Shim

**RRC-1276** CT-1 Spool Shim Kit 3ea - .010,.012,.015,.020

**RRC-1280** Bert Style U.L. Aluminum Spool

**CT-1 AXLE SPOOL**

The **BullDog BITE Locker** by GFS is the premier locker available for dirt or asphalt applications. GFS is one of the top manufacturers of lockers for quick change and non-quick change rears. A beautifully machined piece that offers reliability and performance. If you need to get locked- get the BullDog BITE!



**RRC-1269**  
**BullDog BITE**  
**Locker by GFS**

**GT-1 LOCKER**

**BullDog Ring and Pinions** are produced by the premier ring and pinion manufacturer on Earth! The company is not only contracted by BullDog to produce our ring and pinions but some of the top Formula One teams, auto manufacturers and agricultural equipment producers in the world. Don't settle for a cheap ring and pinion- buy the best.

**RRC-1300-02-05**  
**4.12 Ring &**  
**Pinion - EDM /**  
**Polish**



**CT-1 RING & PINIONS**

**RRC-1300** 4.12 Ring & Pinion

**RRC-1300-02** 4.12 Ring and Pinion - EDM

**RRC-1300-05** 4.12 Ring & Pinion - Polish

**RRC-1301** Ring Gear Bolt

**RRC-1301X** ARP Super Strength Ring Gear Bolt

**RRC-1302** Ring Bolt Washer

**RRC-1305** 4.86 Ring & Pinion

**RRC-1305-02** 4.86 Ring & Pinion - EDM

**RRC-1305-02-05** 4.86 Ring & Pinion - EDM / Polish

**RRC-1305-05** 4.86 Ring & Pinion - Polish

**RRC-1306** Bearing and Posi - Lock Kit

**RRC-1310** Small Pinion Bearing

**RRC-1311** Big Pinion Bearing - Timken

**RRC-1311A** Big Pinion Bearing - Superior

**RRC-1312** Big Pinion Bearing Race



**RRC-1136**  
**Ring Gear Back**  
**Stop Assy.**



**RRC-1312**  
**Big Pinion**  
**Bearing Race**



**RRC-1315**  
**Pinion Bearing**  
**Spacer**

**RRC-1320**  
**Pinion Retainer**  
**Flange**



**RRC-1311**  
**Big Pinion**  
**Bearing - Timken**



**RRC-1371**  
**Posi-Lock**  
**Kit - RH**



**RRC-1330**  
**2 Bolt**  
**Locking Tab**

**RRC-1335**  
**Pinion**  
**Retainer Bolt**

**RRC-1135** Ring Gear Back Stop

**RRC-1140** Back Stop Set Screw

**RRC-1145** Back Stop Washer

**RRC-1150** Back Stop Aluminum Nut

**RRC-1315** Pinion Bearing Spacer

**RRC-1366** Posi-Lock Retainer

**RRC-1367** Posi-Lock O-Ring

**RRC-1368** Pinion Washer

**RRC-1369** Posi-Lock Nut - RH

**RRC-1370** Posi-Lock Nut - LH

**RRC-1372** Posi-Lock Kit - LH

**CT-1 RING & PINION COMPONENTS**

The **Bulldog Gear Cover** is the only cover on the market that has a locating ring for a perfect fit everytime. Gear Cover slides on and off with ease.

Gear Cover Bearing Retainer holds hot bearings in place.



**RRC-1390**  
Gear Cover Bearing Retainer



**RRC-1391**  
Bolts for Gear Cover Bearing Retainer



**RRC-1386B**  
Billet Aluminum Rear Cover w/ Bearings - Black

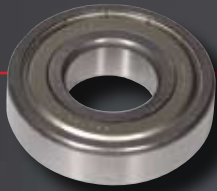


**RRC-1361B**  
Rear Cover High Nut - Blue

CT-1 REAR GEAR COVERS

<b>RRC-1340</b> Rear Cover Gasket (Teflon Coated - Steel Insert)	<b>RRC-1365-01</b> Magnesium Rear Cover w/ Bearings - Black Thermal Coated (Old Style)
<b>RRC-1345</b> Silicone Sealing Ring for Gear Cover	<b>RRC-1385</b> Magnesium Rear Cover - No Bearings (Old Style)
<b>RRC-1350</b> Rear Cover Bearing	<b>RRC-1385-01</b> Magnesium Rear Cover - No Bearings - Black Thermal Coated (Old Style)
<b>RRC-1355</b> Rear Cover Stud	<b>RRC-1386G</b> Billet Aluminum Rear Cover w/ Bearings - Gold
<b>RRC-1361</b> Rear Cover High Nut - Black	<b>RRC-1387B</b> Billet Aluminum Rear Cover - No Bearings - Black
<b>RRC-1361G</b> Rear Cover High Nut - Gold	<b>RRC-1387G</b> Billet Aluminum Rear Cover - No Bearings - Gold
<b>RRC-1365</b> Magnesium Rear Cover w/ Bearings (Old Style)	

All **CT-1 Lower Shafts** are heat treated for strength. The shafts are straightened twice during the machine process for trueness.



**RRC-1411**  
CT-1 Lower  
Shaft Bearing



**RRC-1480**  
CT-1 Front  
Yoke

**RRC-1427**  
CT-1 Lower  
Shaft



**RRC-1412** CT-1 Lower Shaft Bearing - Severe Duty

**RRC-1427A** Washer for CT-1 Lower Shaft Snap Ring

**RRC-1428** CT-1 Titanium Lower Shaft

**RRC-1480A** CT-1 Front Yoke - Aluminum

**RRC-1481** CT-1 Front Yoke Washer

**RRC-1482** CT-1 Front Yoke Bolt

**RRC-1483** CT-1 U-Bolts w/Nuts (2pk.)

**RRC-1485** Aluminum Spacer for under CT-1 Front Yoke

**CT-1 LOWER SHAFT**

**All Bulldog SmartTube Style Axle Tubes are CNC machined to a beautiful finish. They are available in all popular lengths and use a steel sleeve on the seal diameter to aid in wear.**

**RRC-2200-\_\_\_**  
**CT-1 SmartTube**  
**Style Axle Tube**



**CT-1 AXLE TUBES**

<b>RRC-2200-20.188</b>	CT-1 SmartTube Style Axle Tube - 20.188" - Blue
<b>RRC-2200-20.18B</b>	CT-1 SmartTube Style Axle Tube - 20.188" - Black
<b>RRC-2200-22.18M</b>	CT-1 SmartTube Style Axle Tube - 22.188" - Mill Finish
<b>RRC-2200-24.125</b>	CT-1 SmartTube Style Axle Tube - 24.125" - Blue
<b>RRC-2200-24.12B</b>	CT-1 SmartTube Style Axle Tube - 24.125" - Black
<b>RRC-2200-24.62M</b>	CT-1 SmartTube Style Axle Tube - 24.625" - Mill Finish
<b>RRC-2200-28.060</b>	CT-1 SmartTube Style Axle Tube - 28.060" - Blue
<b>RRC-2200-28.06B</b>	CT-1 SmartTube Style Axle Tube - 28.060" - Black
<b>RRC-2200-28.06M</b>	CT-1 SmartTube Style Axle Tube - 28.060" - Mill Finish

<b>RRC-2200-30.125</b>	CT-1 SmartTube Style Axle Tube - 30.125" - Blue
<b>RRC-2200-30.12B</b>	CT-1 SmartTube Style Axle Tube - 30.125" - Black
<b>RRC-2200-30.12M</b>	CT-1 SmartTube Style Axle Tube - 30.125" - Mill Finish
<b>RRC-2200-34</b>	CT-1 SmartTube Style Axle Tube - 34" - Blue
<b>RRC-2200-34B</b>	CT-1 SmartTube Style Axle Tube - 34" - Black
<b>RRC-2200-34M</b>	CT-1 SmartTube Style Axle Tube - 34" - Mill Finish
<b>RRC-2205</b>	Steel Sleeve for SmartTube Style Tube
<b>RRC-2206</b>	O-Ring for Steel Sleeve on SmartTube Style Tube

**BRP Quadlock Tubes** are designed by Bicknell Racing Products for use on their Quadlock Birdcages. The design keeps the birdcage in perfect time in the harshest conditions. The tube utilizes Bulldog's tube detent system for perfect birdcage timing.

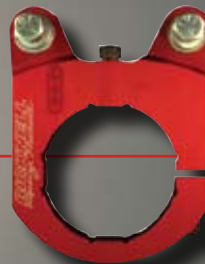


**RRC-2253**  
Left Quadlock  
Birdcage for  
Roller Suspension  
(BRP-9032)



**RRC-2254**  
Right Quadlock  
Birdcage for  
Roller Suspension  
(BRP 9033)

**RRC-2225-\_\_\_**  
CT-1 CT-1 Quadlock  
SmartTube Style  
Axle Tube



**RRC-2255**  
Quadlock Brake  
Bracket  
(BRP-9034)

**RRC-2225-20.188** CT-1 Quadlock SmartTube Style Axle Tube - 20.188"

**RRC-2225-22.188** CT-1 Quadlock SmartTube Style Axle Tube - 22.188"

**RRC-2225-24.125** CT-1 Quadlock SmartTube Style Axle Tube - 24.125"

**RRC-2225-24.625** CT-1 Quadlock SmartTube Style Axle Tube - 24.625"

**RRC-2225-28.060** CT-1 Quadlock SmartTube Style Axle Tube - 28.060"

**RRC-2225-30.125** CT-1 Quadlock SmartTube Style Axle Tube - 30.125"

**RRC-2225-34** CT-1 Quadlock SmartTube Style Axle Tube - 34"

**CT-1 AXLE TUBES**

**Bulldog Splined SmartTube Style Axle Tubes** have truncated splines for added strength. By removing the point at the bottom of the splines, wall thickness is increased and strength is too! If you run splined cages, this is the tube for you. Utilizes Bulldog's tube detent system for perfect birdcage timing. A steel sleeve is used on the seal diameter to aid in wear.



**RRC-2251  
Splined Block  
for Splined  
SmartTube Style  
Birdcage**

**RRC-2250-\_\_\_\_  
CT-1 Splined  
SmartTube Style  
Axle Tube**



**RRC-2252  
Splined Caliper  
Mount for  
SmartTube Style  
Birdcage**

**CT-1 AXLE TUBES**

<b>RRC-2205</b> Steel Sleeve for SmartTube Style Tube
<b>RRC-2206</b> O-Ring for Steel Sleeve on SmartTube Style Tube
<b>RRC-2250-20.188</b> CT-1 Splined SmartTube Style Axle Tube - 20.188" - Blue
<b>RRC-2250-20.18B</b> CT-1 Splined SmartTube Style Axle Tube - 20.188" - Black
<b>RRC-2250-20.18M</b> CT-1 Splined SmartTube Style Axle Tube - 20.188" - Mill Finish
<b>RRC-2250-22.188</b> CT-1 Splined SmartTube Style Axle Tube - 22.188" - Blue
<b>RRC-2250-22.18B</b> CT-1 Splined SmartTube Style Axle Tube - 22.188" - Black
<b>RRC-2250-22.18M</b> CT-1 Splined SmartTube Style Axle Tube - 22.188" - Mill Finish
<b>RRC-2250-24.125</b> CT-1 Splined SmartTube Style Axle Tube - 24.125" - Blue
<b>RRC-2250-24.12B</b> CT-1 Splined SmartTube Style Axle Tube - 24.125" - Black
<b>RRC-2250-24.12M</b> CT-1 Splined SmartTube Style Axle Tube - 24.125" - Mill Finish
<b>RRC-2250-24.625</b> CT-1 Splined SmartTube Style Axle Tube - 24.625" - Blue

<b>RRC-2250-24.62B</b> CT-1 Splined SmartTube Style Axle Tube - 24.625" - Black
<b>RRC-2250-24.62M</b> CT-1 Splined SmartTube Style Axle Tube - 24.625" - Mill Finish
<b>RRC-2250-28.060</b> CT-1 Splined SmartTube Style Axle Tube - 28.060" - Blue
<b>RRC-2250-28.06B</b> CT-1 Splined SmartTube Style Axle Tube - 28.060" - Black
<b>RRC-2250-28.06M</b> CT-1 Splined SmartTube Style Axle Tube - 28.060" - Mill Finish
<b>RRC-2250-30.125</b> CT-1 Splined SmartTube Style Axle Tube - 30.125" - Blue
<b>RRC-2250-30.12B</b> CT-1 Splined SmartTube Style Axle Tube - 30.125" - Black
<b>RRC-2250-30.12M</b> CT-1 Splined SmartTube Style Axle Tube - 30.125" - Mill Finish
<b>RRC-2250-34</b> CT-1 Splined SmartTube Style Axle Tube - 34" - Blue
<b>RRC-2250-34B</b> CT-1 Splined SmartTube Style Axle Tube - 34" - Black
<b>RRC-2250-34M</b> CT-1 Splined SmartTube Style Axle Tube - 34" - Mill Finish

**BullDog Spindle Style Axle Tubes** are fully CNC machined to exact specs on bearing and seal diameters. These tubes are built to take abuse. The tubes feature a mirror finish with brilliant anodizing. Available in all popular lengths.



**RRC-2275-\_\_\_**  
**CT-1 Spindle Style**  
**Aluminum Axle**  
**Tube**

<b>RRC-2275-26.625</b>	CT-1 Spindle Style Aluminum Axle Tube - 26.625" - Blue
<b>RRC-2275-26.62B</b>	CT-1 Spindle Style Aluminum Axle Tube - 26.625" - Black
<b>RRC-2275-26.62M</b>	CT-1 Spindle Style Aluminum Axle Tube - 26.625" - Mill Finish
<b>RRC-2275-28.125</b>	CT-1 Spindle Style Aluminum Axle Tube - 28.125" - Blue
<b>RRC-2275-28.12B</b>	CT-1 Spindle Style Aluminum Axle Tube - 28.125" - Black
<b>RRC-2275-28.12M</b>	CT-1 Spindle Style Aluminum Axle Tube - 28.125" - Mill Finish
<b>RRC-2275-29.125</b>	CT-1 Spindle Style Aluminum Axle Tube - 29.125" - Blue
<b>RRC-2275-29.12B</b>	CT-1 Spindle Style Aluminum Axle Tube - 29.125" - Black

<b>RRC-2275-29.12M</b>	CT-1 Spindle Style Aluminum Axle Tube - 29.125" - Mill Finish
<b>RRC-2275-30.125</b>	CT-1 Spindle Style Aluminum Axle Tube - 30.125" - Blue
<b>RRC-2275-30.12B</b>	CT-1 Spindle Style Aluminum Axle Tube - 30.125" - Black
<b>RRC-2275-30.12M</b>	CT-1 Spindle Style Aluminum Axle Tube - 30.125" - Mill Finish
<b>RRC-2275-34</b>	CT-1 Spindle Style Aluminum Axle Tube - 34" - Blue
<b>RRC-2275-34B</b>	CT-1 Spindle Style Aluminum Axle Tube - 34" - Black
<b>RRC-2275-34M</b>	CT-1 Spindle Style Aluminum Axle Tube - 34" - Mill Finish

**CT-1 AXLE TUBES**

**BullDog 8 Bolt Tubes** are built to withstand all the beating and banging you can throw at them. 8 bolt tubes utilize BullDog's tube detent system for perfect birdcage timing.

**RRC-2280-\_\_\_\_\_**  
**CT-1 Aluminum**  
**8-Bolt Tube**



**RRC-2281**  
**Steel 8-bolt**  
**Spindle**

**RRC-2282**  
**Steel 8-bolt**  
**Spindle - Heat**  
**Treated**

**CT-1 AXLE TUBES**

<b>RRC-2280-15</b> CT-1 Aluminum 8-Bolt Tube - 15" - Blue	<b>RRC-2280-22.62M</b> CT-1 Aluminum 8-Bolt Tube - 22.625" - Mill Finish
<b>RRC-2280-15B</b> CT-1 Aluminum 8-Bolt Tube - 15" - Black	<b>RRC-2280-23</b> CT-1 Aluminum 8-Bolt Tube - 23" - Blue
<b>RRC-2280-15M</b> CT-1 Aluminum 8-Bolt Tube - 15" - Mill Finish	<b>RRC-2280-23B</b> CT-1 Aluminum 8-Bolt Tube - 23" - Black
<b>RRC-2280-16.5</b> CT-1 Aluminum 8-Bolt Tube - 16.5" - Blue	<b>RRC-2280-23M</b> CT-1 Aluminum 8-Bolt Tube - 23" - Mill Finish
<b>RRC-2280-16.5B</b> CT-1 Aluminum 8-Bolt Tube - 16.5" - Black	<b>RRC-2280-24.75</b> CT-1 Aluminum 8-Bolt Tube - 24..75" - Blue
<b>RRC-2280-16.5M</b> CT-1 Aluminum 8-Bolt Tube - 16.5" - Mill Finish	<b>RRC-2280-24.75B</b> CT-1 Aluminum 8-Bolt Tube - 24..75" - Black
<b>RRC-2280-22.625</b> CT-1 Aluminum 8-Bolt Tube - 22.625" - Blue	<b>RRC-2280-24.75M</b> CT-1 Aluminum 8-Bolt Tube - 24..75" - Mill Finish
<b>RRC-2280-22.62B</b> CT-1 Aluminum 8-Bolt Tube - 22.625" - Black	

**BullDog Steel Axle Tubes** are available in spindle style or GN style. GN style are also available in two different thicknesses.



**RRC-2285-\_\_\_**  
**CT-1 GN**  
**Steel Tube**

<b>RRC-2285-22</b>	CT-1 GN Steel Tube - 22"
<b>RRC-2285-23</b>	CT-1 GN Steel Tube - 23"
<b>RRC-2285-24</b>	CT-1 GN Steel Tube - 24"
<b>RRC-2285-25</b>	CT-1 GN Steel Tube - 25"
<b>RRC-2285-26</b>	CT-1 GN Steel Tube - 26"
<b>RRC-2286-22</b>	CT-1 GN Steel Tube - 22" - .125" Wall
<b>RRC-2286-23</b>	CT-1 GN Steel Tube - 23" - .125" Wall

<b>RRC-2286-24</b>	CT-1 GN Steel Tube - 24" - .125" Wall
<b>RRC-2286-25</b>	CT-1 GN Steel Tube - 25" - .125" Wall
<b>RRC-2286-26</b>	CT-1 GN Steel Tube - 26" - .125" Wall
<b>RRC-2290-28.125</b>	CT-1 Spindle Style Steel Axle Tube - 28.125"
<b>RRC-2290-30.5</b>	CT-1 Spindle Style Steel Axle Tube - 30.5"
<b>RRC-2290-32.125</b>	CT-1 Spindle Style Steel Axle Tube - 32.125"

**CT-1 AXLE TUBES**

**BullDog 2Tuff Hollow 31 Spline Axles** are built to withstand the most severe punishment. 2Tuff Hollow Axles stand up to big block power with ease. Used throughout 2010 by the top modified and late model racers in the country.

**RRC-2300-\_\_\_**  
**CT-1 2Tuff Hollow**  
**31 Spline Axle**



**RRC-2300-25.5** 2Tuff Hollow 31 Spline Axle - 25.5"

**RRC-2300-27.5** 2Tuff Hollow 31 Spline Axle - 27.5"

**RRC-2300-28.25** 2Tuff Hollow 31 Spline Axle - 28.25"

**RRC-2300-29.75** 2Tuff Hollow 31 Spline Axle - 29.75"

**RRC-2300-32.5** 2Tuff Hollow 31 Spline Axle - 32.5"

**RRC-2300-33.5** 2Tuff Hollow 31 Spline Axle - 33.5"

**RRC-2300-35** 2Tuff Hollow 31 Spline Axle - 35"

**RRC-2300-36** 2Tuff Hollow 31 Spline Axle - 36"

**RRC-2300-38** 2Tuff Hollow 31 Spline Axle - 38"

**RRC-2300-CL** 2Tuff Hollow 31 Spline Axle - Custom Length

**CT-1 AXLES**

**BullDog Solid Steel Axles** are manufactured by Performance Engineering Machine. They are a quality axle at an affordable price.

**RRC-2350-\_\_\_\_**  
**CT-1 Solid 31**  
**Spline Axle**

**RRC-2350-25.5** Solid 31 Spline Axle - 25.5"

**RRC-2350-28.25** Solid 31 Spline Axle - 28.25"

**RRC-2350-29.75** Solid 31 Spline Axle - 29.75"

**RRC-2350-30.5** Solid 31 Spline Axle - 30.5"

**RRC-2350-31** Solid 31 Spline Axle - 31"

**RRC-2350-32.5** Solid 31 Spline Axle - 32.5"

**RRC-2350-33.5** Solid 31 Spline Axle - 33.5"

**RRC-2350-35** Solid 31 Spline Axle - 35"

**RRC-2350-36** Solid 31 Spline Axle - 36"

**RRC-2350-38** Solid 31 Spline Axle - 38"

**RRC-2350-CL** Solid 31 Spline Axle - Custom Length

**RRC-2401**  
BRP Lifetime  
Rear Hub for  
SmartTube Style  
Tube (BRP 6202)



**RRC-2402**  
BRP Drive Flange  
for RRC-2402  
Hub (BRP 6202D)



**RRC-2421**  
Bert Drive Flange  
for SmartTube  
Rear Hub  
(CTD-016)



**RRC-2420**  
Bert SmartTube  
Rear Hub  
(CTD-001)

**RRC-2403** Seal for SmartTube Style Hub - No Steel Sleeve  
**RRC-2404** Bearing for SmartTube Style Hubs - Bert I.D.  
**RRC-2405** Viton Seal for SmartTube Style Hub w/ Steel Ring

**RRC-2406** BRP Locknut for SmartTube Style Tube (BRP 6230)  
**RRC-2422** Bert Locknut Kit for SmartTube Style Tube (CTD-021)



**RRC-2462**  
**Wilwood 5 Bolt**  
**Drive Flange for**  
**Wide 5 Hub**  
**(270-6732)**



**RRC-2466**  
**Bicknell**  
**Ultralight Wide**  
**5 8 Bolt Drive**  
**Flange - Red**  
**(BRP 343)**



**RRC-2465**  
**Bicknell**  
**Magnesium Wide**  
**5 Hub**  
**(BRP 6200)**



**RRC-2460**  
**Wilwood Starlite**  
**55 Wide 5 Hub - 5**  
**Bolt (270-6513C)**

**RRC-2461** Wilwood Starlite 55 Wide 5 Hub - 5 Bolt - Black (270-6513C)

**RRC-2463** Wilwood Starlite 55 Wide 5 Dynamic Mount Hub - 5 Bolt (270-8435C)

**RRC-2464** Dynamic Rotor Mount Plate for RRC-2463 Hub (300-8431)

**RRC-2466G** Bicknell Ultralight Wide 5 8 Bolt Drive Flange - Gold (BRP 343G)

**RRC-2466BK** Bicknell Ultralight Wide 5 8 Bolt Drive Flange - Black (BRP 343BK)

**RRC-2466BL** Bicknell Ultralight Wide 5 8 Bolt Drive Flange - Blue (BRP 343BL)

**RRC-2467** Locknut for Wide 5 Hub (BRP 320)

**RRC-2468** Inner Race - Wide 5 Hub

**RRC-2469** Inner Bearing - Wide 5 Hub

**RRC-2470** Outer Race - Wide 5 Hub

**RRC-2471** Outer Bearing - Wide 5 Hub

**RRC-2472** Wide 5 Hub Seal

**RRC-2473** Wide 5 Hub Seal - O-Ring Style Low Drag Teflon

**RRC-2474** Wide 5 Bearing, Seal and Locknut Kit

**CT-1 WIDE 5 HUBS**

**GN Steel 5x5 Hub** features a lightweight steel drive flange that offers reliability and strength.

**RRC-2450**  
**GN Steel**  
**5x5 Hub**



**RRC-2451** Hub Bearing for GN 5x5 Hub

**RRC-2452** Hub Race for GN 5x5 Hub

**RRC-2453** Hub Seal for GN 5x5 Hub

**RRC-2454** Hub Seal for GN 5x5 Hub - Teflon

**RRC-2455** Locknut for GN 5x5 Hub

**CT-1 GN 5X5 HUBS**

# IMPORTANT! PLEASE READ!

## THE BULLDOG CT-1 BY DMI.

There are a few important things you should know to get the most out of the CT-1 quick change.  
Here are a few tips.

### **Oil**

Fill rear end through the large inspection plug on the right side. The oil should just cover the lower shaft. The rear is equipped with a fill level plug just below the large inspection plug. Fill rear until the oil runs out of the level plug. Please be sure to check the oil level often and after every gear change. We also recommend the use of a high quality gear lube, such as **Bulldog Blood by Champion Racing XP Synthetic or Joe Gibbs 75W110 Gear Oil.** (We stand behind premature failure/pitting only if using **Bulldog Blood.**)

### **Torque Specs and Rear Settings**

Side Bell Nuts - 35 ft/lbs.

Threaded Ring Gear - 60 ft/lbs.

Pinion Retainer Bolts - 25 ft/lbs.

Pinion Backlash - .004 - .008.

Rotational Pinion Preload (No spool) - 25 in/lbs. @ 70 F.

Rotational Pinion Preload (Complete Assy.) - 35 in/lbs. @ 70 F.

Front Seal Plate Bolts - 35 ft/lbs.

### **Starting Recommendations for Shims**

Left - .024" Right - .055"

Rear should be rebuilt every 1000 laps.

**IF YOU HAVE A QUESTION - CALL - DO NOT GUESS!!!!!!**



**SPECS FOR CT-1 REARS**